



## **Tech Trends 2018**

The symphonic enterprise

Scott Buchholz

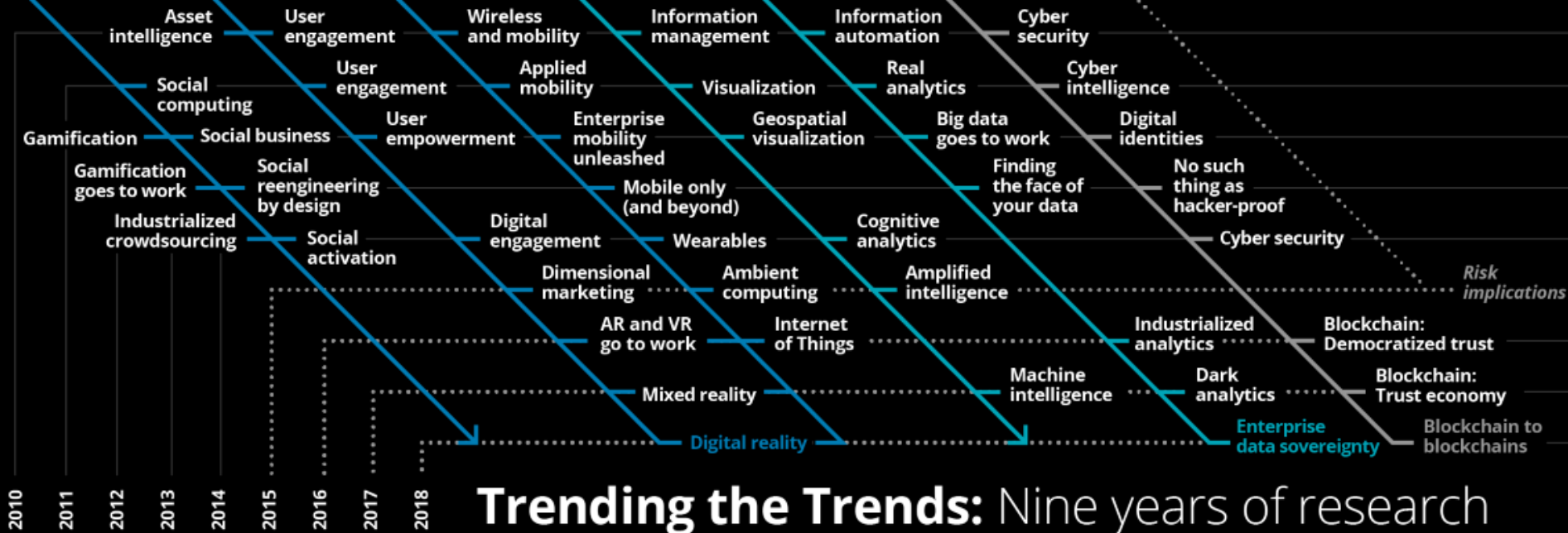
Chief Technology Officer – Government Practice

Deloitte Consulting LLP

# DIGITAL

# ANALYTICS

# CYBER



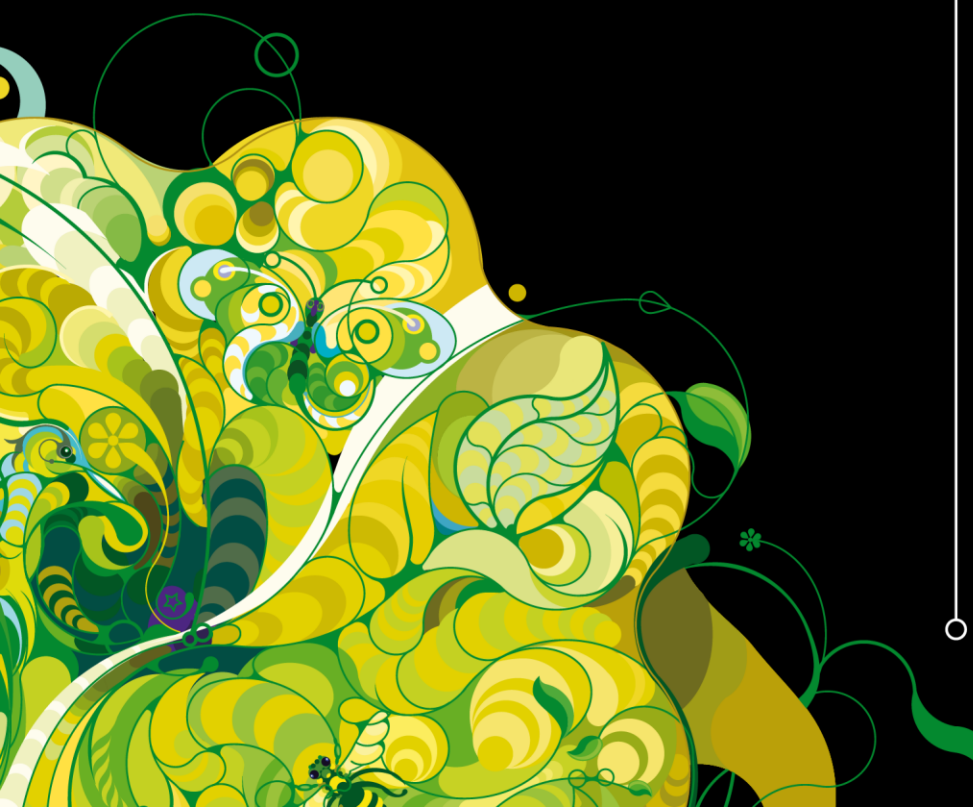
# BUSINESS OF IT

# CLOUD

# CORE

## Tech Trends 2018

# The symphonic enterprise



Reengineering  
technology



No-collar  
workforce



Enterprise data  
sovereignty



The new  
core



Digital  
reality



Blockchain to  
blockchains



API  
imperative



Exponential  
technology  
watch list

---

# REENGINEERING TECHNOLOGY

*Fundamentally rethinking the IT  
organization from the top-down  
and bottom-up*

---

# NO-COLLAR WORKFORCE

*A new workplace and talent model that  
serves both machines and humans*

---

# ENTERPRISE DATA SOVEREIGNTY

*Balancing control and accessibility of  
the enterprise's most valuable asset*

---

# THE NEW CORE

*Finance and supply chain converge  
with disruptive technologies to  
reshape business*

---

# DIGITAL REALITY

*Fundamentally reimagining engagement  
with customers, employees, and partners*



---

# BLOCKCHAIN TO BLOCKCHAINS

*Building a blockchain ecosystem upon  
the foundation of trust and digital assets*

---

# API IMPERATIVE

*Leveraging digital building blocks  
within and beyond the enterprise*

---

# EXPONENTIAL TECHNOLOGY WATCH LIST

*Institutionalizing innovation to bring  
the future into focus today*



#### **About Deloitte**

Deloitte refers to one or more of Deloitte Touche Tohmatsu Limited, a UK private company limited by guarantee (“DTTL”), its network of member firms, and their related entities. DTTL and each of its member firms are legally separate and independent entities. DTTL (also referred to as “Deloitte Global”) does not provide services to clients. Please see [www.deloitte.com/about](http://www.deloitte.com/about) for a detailed description of DTTL and its member firms. Please see [www.deloitte.com/us/about](http://www.deloitte.com/us/about) for a detailed description of the legal structure of Deloitte LLP and its subsidiaries. Certain services may not be available to attest clients under the rules and regulations of public accounting.

This publication contains general information only and Deloitte is not, by means of this publication, rendering accounting, business, financial, investment, legal, tax, or other professional advice or services. This publication is not a substitute for such professional advice or services, nor should it be used as a basis for any decision or action that may affect your business. Before making any decision or taking any action that may affect your business, you should consult a qualified professional advisor. Deloitte shall not be responsible for any loss sustained by any person who relies on this publication.

Copyright © 2017 Deloitte Development LLC. All rights reserved.